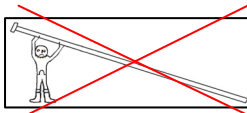
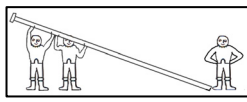
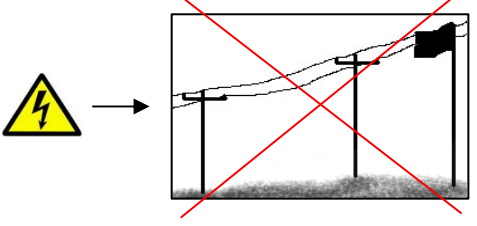
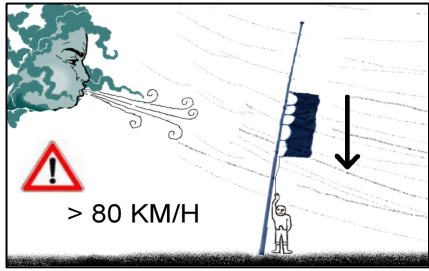


Universal-Bodenhalterung

Bodenhalterung für Masten $\varnothing 60 - \varnothing 150$

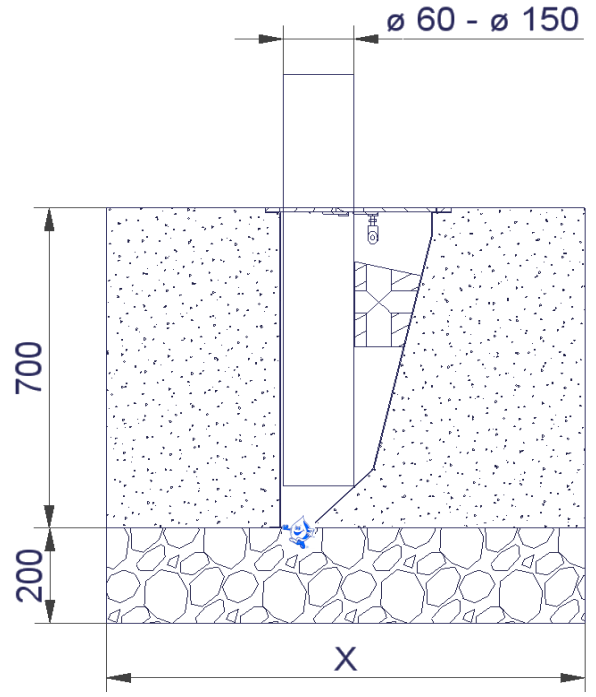
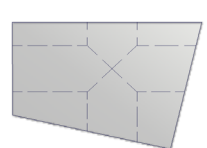
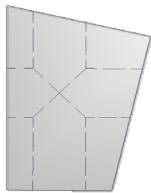
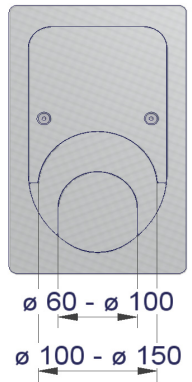
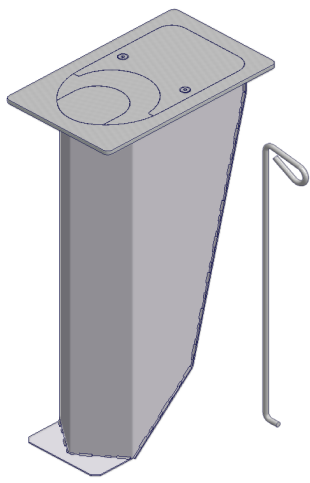


L	X
10 m	100 cm
11 m	110 cm
12 m	120 cm

Gewachsener Boden



Mit ISK Schlüssel 5 mm werden die Deckel verschraubt.



Schlitten drehen für entsprechendem Mastdurchmesser.
Schlitten sollte im oberen Drittel des Halters den Mast klemmen.
Hochkant > $\varnothing 100$ mm Waagrecht < $\varnothing 100$ mm